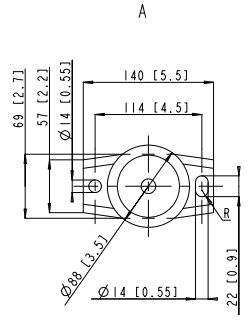


ALTERNATIVE METHOD FOR ENGINE MOUNT:
PRE-DRILL STRINGERS USING $\varnothing 9$ [11/32] FOR PILOT TO DEPTH EQUIVALENT TO PENETRATION OF SCREW AND $\varnothing 13$ [1/2] C BORE IF NECESSARY. ONLY TO DEPTH REQUIRED TO CLEAR SCREW SHANK.

LETTER	NAME
A	OIL FILTER, ENGINE
B	OIL FILL, ENGINE
C	OIL DRAIN, ENGINE
D	OIL DIPSTICK, ENGINE
E	WATER DRAIN
F	LIFTING DEVICE
G	FUEL CONNECTION, I.D. 9,5 [3/8] NPT OR 6,35 [1/4] NPT
H	FUEL FILTER
I	ELECTRICAL FUEL PUMP
J	THROTTLE CABLE SINGLE
K	WATER COOLED EXHAUST PIPE FOR HOSE I.D. 98,4 [3 7/8"]
L	STARTER MOTOR
M	FUSE PANEL
N	ELECTRICAL CONNECTION ENGINE - INSTRUMENT PANEL
O	CIRCUIT BREAKER FOR TRIM PUMP
P	OIL FILL, POWER STEERING
Q	
R	STEERING CABLE
S	WATER INTAKE
T	OIL FILL, OUTBOARD UNIT
U	OIL DRAIN, OUTBOARD UNIT
V	OIL DIPSTICK, OUTBOARD UNIT
W	
X	SEE INSTALATION INSTRUCTIONS
Y	
Z	ENGINE FLUSH
AA	EXHAUST OVERHEAT SWITCH ENGINE ALARM IN SMALL PARTS KIT
AB	EVC SHIFT CABLE
AC	MANIFOLD ANODE
AD	
AE	
AF	
AG	
AH	
AI	
AJ	
AK	



SX NOT APPROVED FOR TWIN INSTALLATIONS

STRINGERS MAY HAVE TO BE RELIEVED FOR EXHAUST PIPE CLEARANCE. 2 PLACES.

