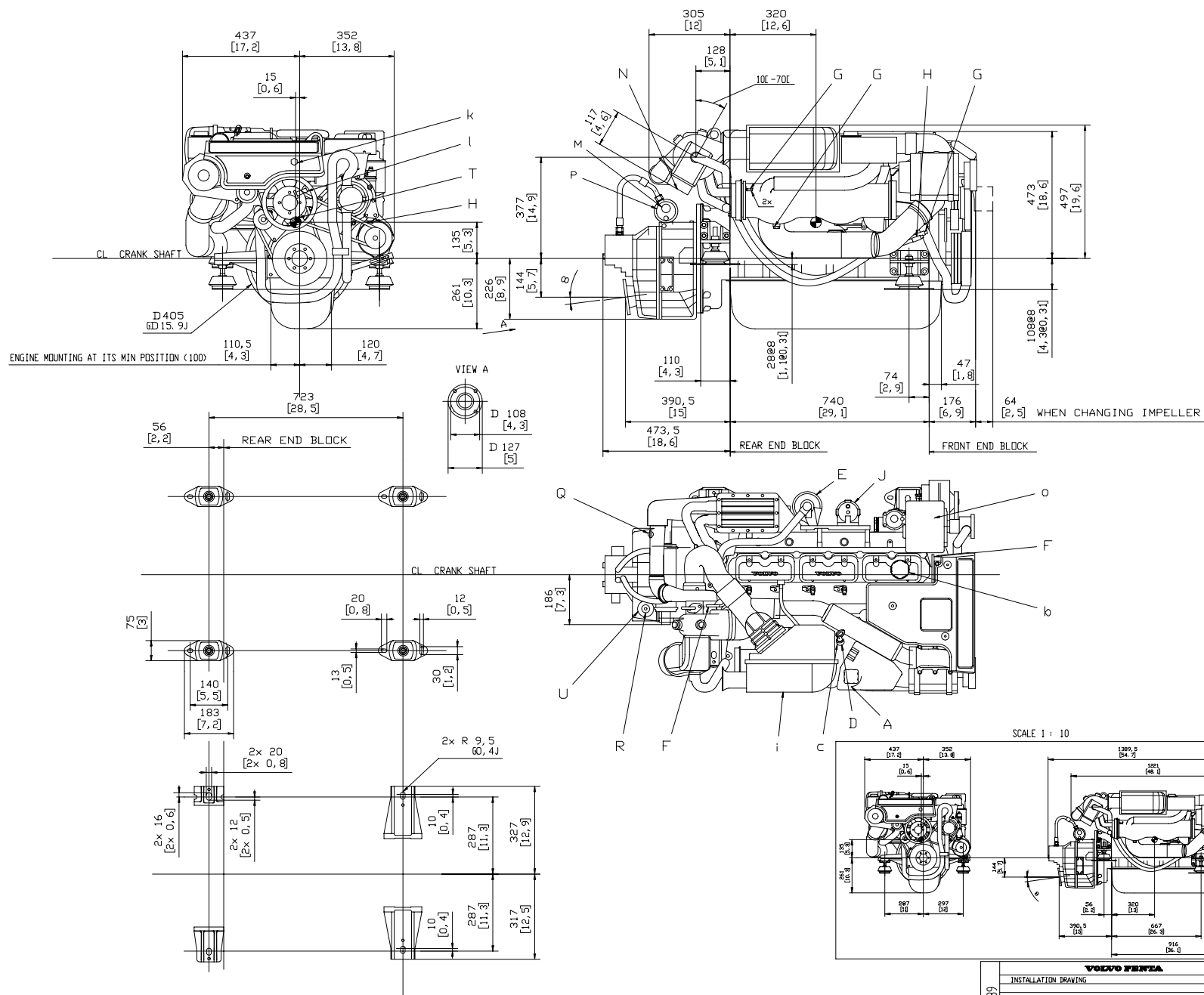


- (A) WATER FILLER CAP FRESH WATER
- (B) OIL FILLER CAP, ENGINE
- (C) OIL DIP STICK, ENGINE
- (D) OIL DRAIN (WITH PUMP), ENGINE
- (E) OIL FILTER
- (F) LIFTING DEVICE
- (G) WATER DRAIN, FRESH WATER
- (H) WATER DRAIN, SEA WATER
- (I) AIR FILTER
- (J) FUEL FILTER
- (K) HEAT WATER OUTLET COMPRESSION SIDE 1/2-14 NPSF
- (L) HEAT WATER OUTLET LOW SIDE 1/2-14 NPSF
- (M) WATER INLET FOR HOSE D 32 G1,25J I.D
- (N) WATER COOLED EXHAUST PIPE D 89 G3,5J I.D
- (P) CONNECTION BOX
- (Q) OILCOOLER, REVERSE GEAR
- (R) OIL DIPSTICK, REVERSING GEAR
- (S) OIL SUCTION FILTER REVERSING GEAR
- (T) GEAR CONTROL CABLE
- (U) CENTRE OF GRAVITY
- (V) OIL DRAIN REVERSING GEAR (WITH PUMP)



DIMENSION IN MILLIMETRES AND INCHES

0 10 20 30 40 50 60 70 80 90 100

VOLVO PENTA			
INSTALLATION DRAWING			
3590339			
DATE	1.5	TYPE	KAMD44/ HSG3AE
DESIGNER	MR	DATE	198210
CHECKED	PC	DATE	198210
3590339			02