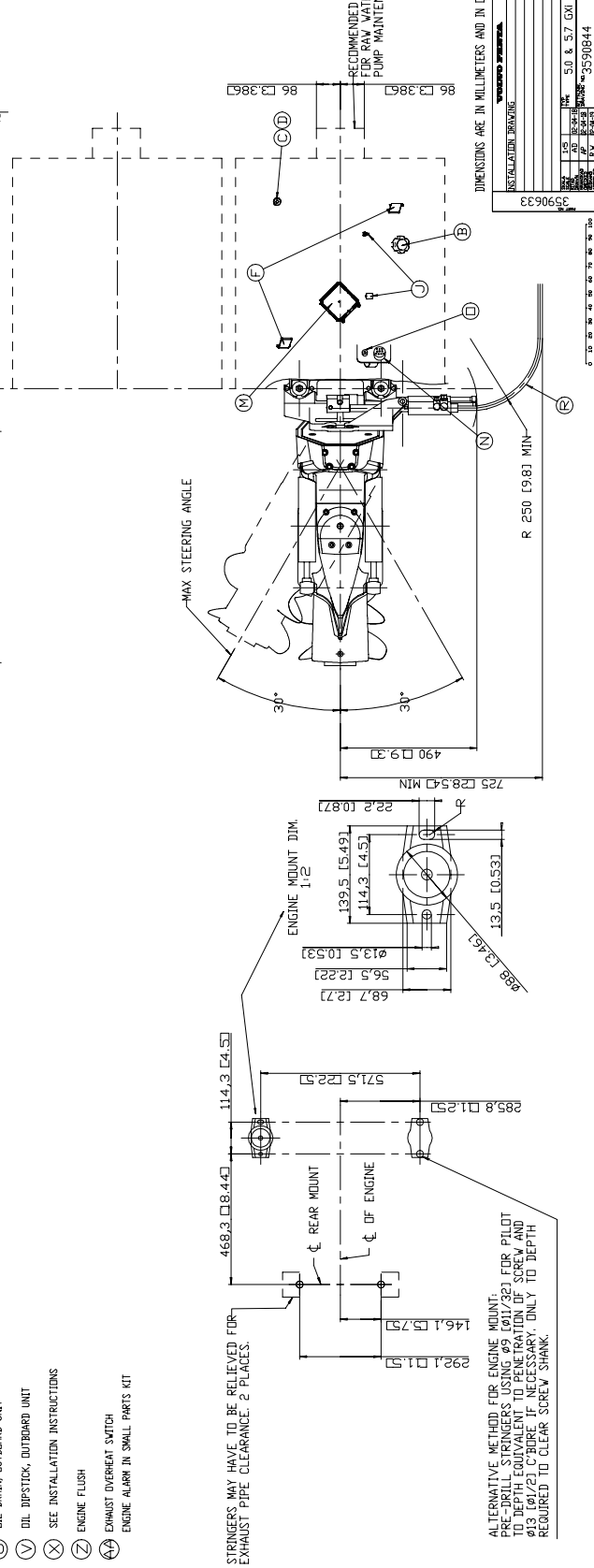
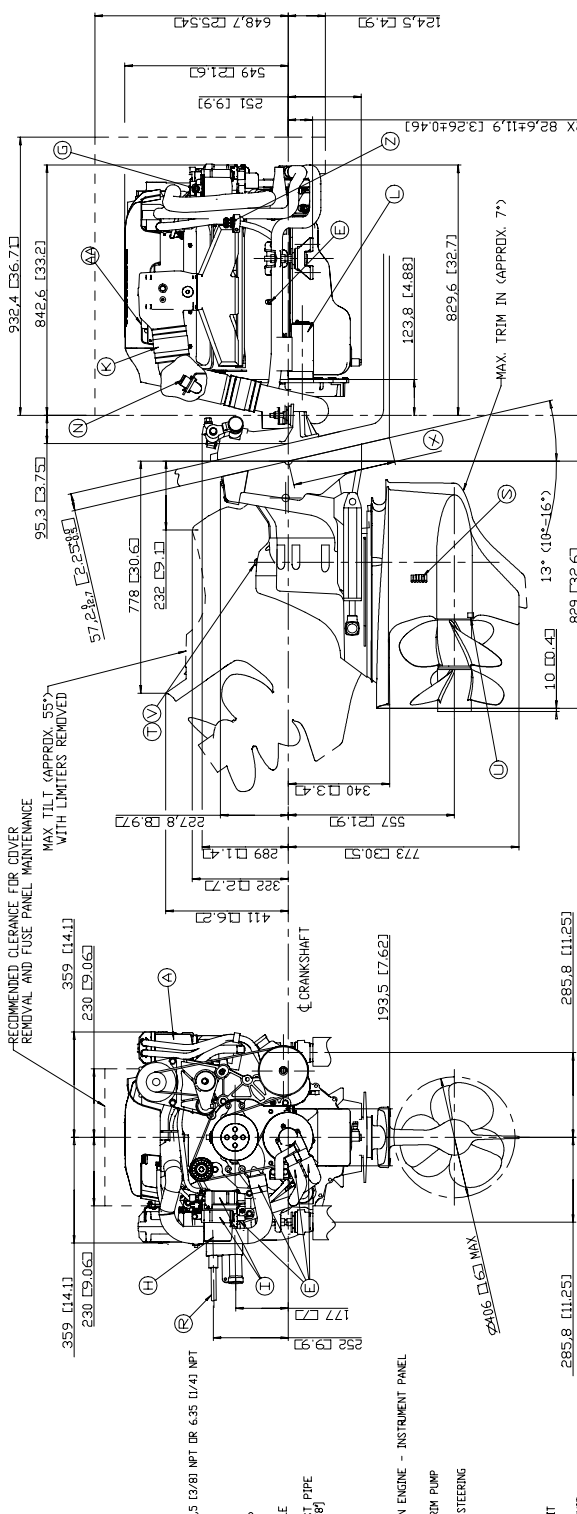


- (A) OIL FILTER, ENGINE
- (B) OIL FILL ENGINE
- (C) OIL DRAIN ENGINE
- (D) OIL DIPSTICK ENGINE
- (E) WATER DRAIN
- (F) LIFTING DEVICE
- (G) FUEL CONNECTION, I.D. 9.5 (3/8) NPT OR 6.35 (1/4) NPT
- (H) FUEL FILTER
- (I) ELECTRICAL FUEL PUMP
- (J) THROTTLE CABLE SINGLE
- (K) WATERS COOLED EXHAUST PIPE FOR HOSE I.D. 96.4 (3 7/8)
- (L) STARTER MOTOR
- (M) FUSE PANEL
- (N) ELECTRICAL CONNECTION ENGINE - INSTRUMENT PANEL
- (O) CIRCUIT BREAKER FOR TRIM PUMP
- (P) OIL FILL AND DIPSTICK, STEERING
- (R) STEERING CABLE
- (S) WATER INTAKE
- (T) OIL FILL, OUTBOARD UNIT
- (U) OIL DRAIN, OUTBOARD UNIT
- (V) OIL DIPSTICK, OUTBOARD UNIT
- (X) SEE INSTALLATION INSTRUCTIONS
- (Z) ENGINE FLUSH
- (AA) EXHAUST OVERHEAT SWITCH
- ENGINE ALARM IN SMALL PARTS KIT



STRUNGERS MAY HAVE TO BE BELIEVED FOR EXHAUST PIPE CLEARANCE. 2 PLACES.

ALTERNATIVE METHOD FOR ENGINE MOUNT. SEE INSTRUCTIONS FOR PILOT TO DEPTH EQUIVALENT TO POSITION OF SCREW AND Ø13 (Ø1/2) C-BORE IF NECESSARY. ONLY TO DEPTH REQUIRED TO CLEAR SCREW SHANK.

RECOMMENDED CLEARANCE FOR RAW WATER PUMP MAINTENANCE

DIMENSIONS ARE IN MILLIMETERS AND IN ( ) INCHES

INSTALLATION DRAWING

3590633

50 & 57 GKI / JPS

3590844

01